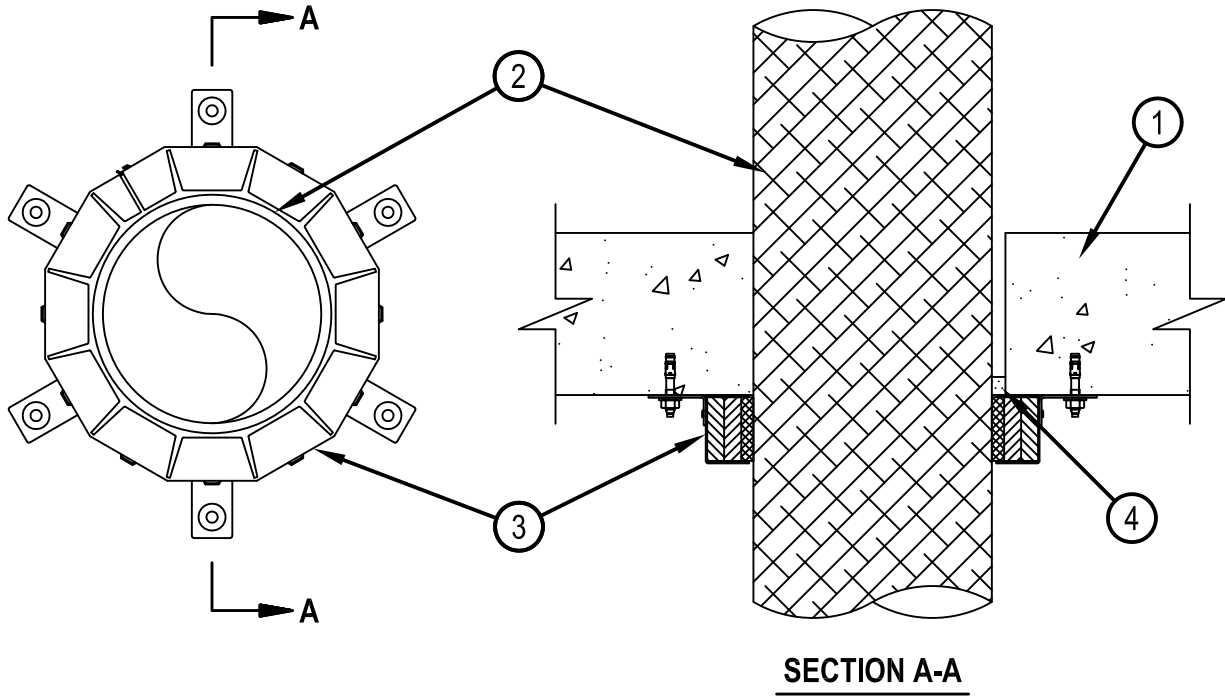




Classified by
Underwriters Laboratories, Inc.
to UL 1479

System No. C-AJ-2272
F Rating — 2 Hr
T Rating — 1 Hr
W Rating - Class 1 (See Item 4)

CAJ 2272



1. Floor or Wall Assembly — Min 4-1/2 in. (114 mm) thick reinforced lightweight or normal weight (100-150 pcf or 1600-2400 kg/m³) concrete. Wall may also be constructed of any UL Classified Concrete Blocks*. Max diam of opening is 7 in. (178 mm).
See Concrete Blocks (CAZT) category in the Fire Resistance Directory for names of manufacturers.
2. Fiberglass Reinforced Pipe (FRP) — Nom 6 in. (152 mm) diam fiberglass reinforced pipe for use in closed (process or supply) or vented (drain, waste or vent) piping systems installed concentrically or eccentrically within the firestop system. Annular space between pipe and edge of opening to be min 0 in. (point contact) and max 1/2 in. (13 mm). Pipe or conduit to be rigidly supported on both sides of floor-ceiling assembly.
3. Fill, Void or Cavity Materials* — Sealant — Min 1/2 in. (13 mm) thickness of fill material applied within the annulus, flush with bottom surface of floor. W Rating applies only when CP601S, CFS-S SIL GG or CFS-S SIL SL (floors only) Sealant is used.
HILTI CONSTRUCTION CHEMICALS, DIV OF HILTI INC — FS-ONE Sealant, FS-ONE MAX Intumescent Sealant, CFS-S SIL GG, CFS-S SIL SL (floors only) or CP601S Sealant
4. Firestop Device* — Firestop Collar — Firestop collar shall be installed in accordance with the accompanying installation instructions. Collar to be installed and latched around the pipe and secured to underside of floor or both sides of wall using six anchor hooks provided with the collar. The anchor hooks are to be secured with min 1/4 in. (6 mm) diam by min 1-1/4 in. (32 mm) long steel expansion bolts or min 0.145 in. (3.7 mm) diam by 1-1/4 in. (32 mm) long powder actuated fasteners utilizing a 1-7/16 in. (36.5 mm) diam by 1/16 in. (1.6 mm) thick steel washer. As alternates to the anchors specified above, Hilti 1/4 in. (6 mm) diam by 1-1/4 in. (32 mm) long KWIK-CON II+ concrete screw anchor, Hilti 1/4 in. (6 mm) diam by 1-3/4 in. (44 mm) long KWIK-BOLT 3 steel expansion anchor or Hilti X-DNI 27 P8 S15 powder actuated floor pin with integral nom 9/16 in. (14 mm) diam washer may be used.
HILTI CONSTRUCTION CHEMICALS, DIV OF HILTI INC — CP643 160/6"N Firestop Collar

* Indicates such products shall bear the UL or cUL Certification Mark for jurisdictions employing the UL or cUL Certification (such as Canada), respectively.



Reproduced by HILTI, Inc. Courtesy of
Underwriters Laboratories, Inc.
January 09, 2015