

SIZE Seismic Set	SIZE HUS3	SIZE HUS4	$t_{fix, effective}$ (mm)
M10	8	8	$t_{fix} - 7$ mm
M12	10	10	$t_{fix} - 8$ mm
M16		12	$t_{fix} - 9$ mm
M16	14	14	$t_{fix} - 9$ mm
M20		16	$t_{fix} - 13$ mm

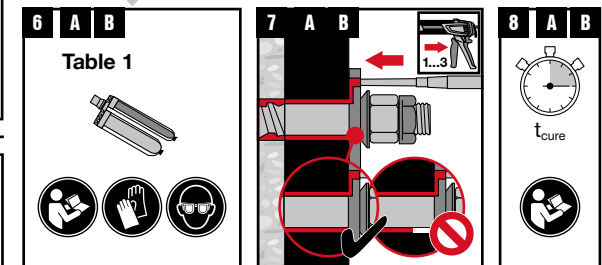
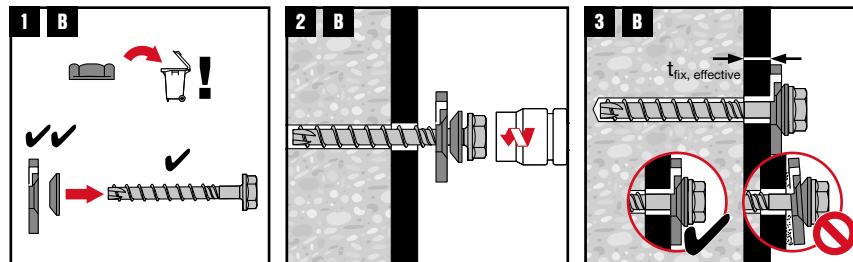
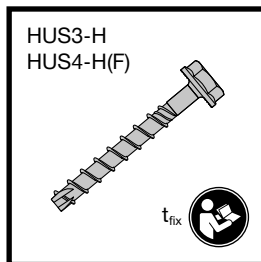


Table 1

Anchor	HIT-HY... HIT-RE... HVU2, HVU-TZ	HST, HST2, HST3, HST4, HSL4, HDA, HMU, HSA	HUS3 HUS4	HUS4 Max
Element	HAS (-U), HAS-E (-HCR)- (R)TZ, HAS (-HCR)- (R)TZ, HIT-Z/V/C, AM, HZA, HIS-N	/	/	HUS4

HIT-HY...	HIT-RE...
HIT-HY 200-A (V3) HIT-HY 200-R (V3) HIT-HY 270 HIT-HY 170 HIT-HY 100 HIT-CT1	HIT-RE 500 V4 HIT-RE 500 V3 HIT-RE 100 HIT-RE 100-HC HIT-RE 10

AT system compatible
HIT-Z (-R), HAS-U, HAS HST2 (-R), HST3 (-R), HST2v3 (-R), HST4 (-R) HSA (-R) HSL4-G

Fill filling set with:

HIT-HY...	✓	✓	✓	✓
HIT-RE...	✓	✗	✓	✓

✓	Can be used (Δ check approval coverage in p2 of the IFU and in the relevant ETA)
✗	Cannot be used

